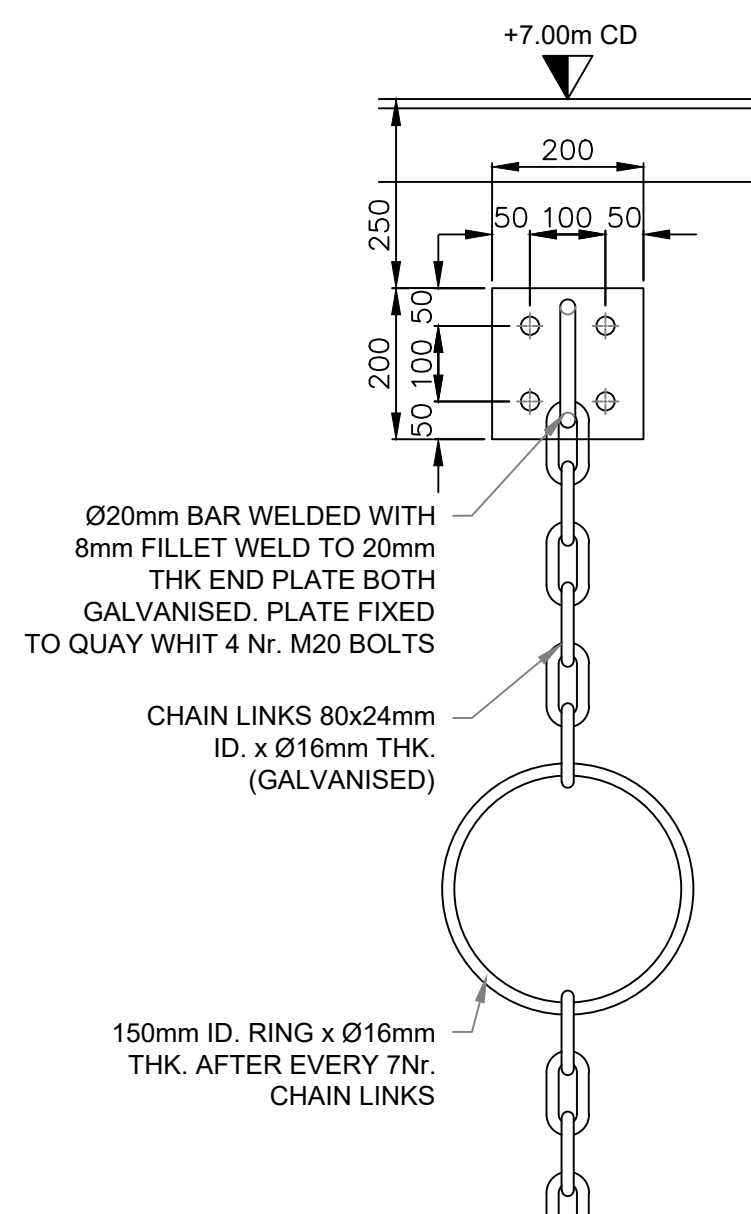
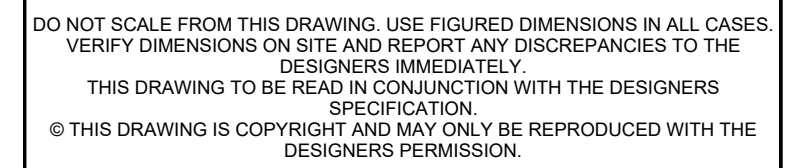


DETAIL NOSE OF DECK APPROX. 312m
SCALE: 1:5



10MM SQ. EARTHING CABLES FROM ALL EXPOSED STEELWORK TO BE INTER-CONNECTED WITH COMPLEMENTARY TERMINAL BLOCK CONNECTORS OR CRIMPED BUTT CONNECTORS AND FED THROUGH THE INSITU CONCRETE DECK POURS AND TERMINATED IN THE NEAREST ELECTRICAL DRAW CHAMBER AND CONNECTED INTO A COPPER EARTHING BAR OF MIN. 30x6mm IN CROSS-SECTION AND WITH CIRCA 1mm DIA HOLES FOR CONNECTIONS. THE EARTHING BAR TO BE MOUNTED ON A PAIR OF BRACKETS OR BOLTS FIXED INTO THE SIDE FACE OF THE CHAMBER AND ALL PROTECTED FROM CORROSION.



NOTES:

1. ALL DRAWINGS ARE TO BE READ IN CONJUNCTION WITH ALL RELEVANT SPECIFICATIONS, BILLS OF QUANTITIES, SERVICES AND ENGINEERING DRAWINGS.
2. ANY DISCREPANCIES BETWEEN THESE DOCUMENTS SHALL BE BROUGHT TO THE ATTENTION OF THE ENGINEER.
3. ALL DIMENSIONS ARE IN METERS UNLESS OTHERWISE STATED.
4. USE DIMENSIONS ON DRAWINGS (DO NOT SCALE FROM DRAWINGS).
5. GRID AND COORDINATES ARE IN METRES RELATIVE TO I.T.M.
6. ALL LEVELS ARE IN METRES RELATIVE TO CHART DATUM (CD).
O.D (MALIN) = +2.903MCD
(POOLBEG) = +0.2MCD
7. MEAN HIGH WATER (MHW) = +4.4MCD
MEAN LOW WATER (MLW) = +1.3MCD

CONSTRUCTION NOTES:

1. THE FOLLOWING SERVICES ARE TO BE PROVIDED TO THE BERTH AND HANDSTANDING AREA VIA SERVICE TRENCH(ES) AND/OR DUCTS:
 - a) ELECTRICITY
 - b) FRESH WATER
 - c) FIRE FIGHTING FACILITIES
 - d) TELECOMMUNICATIONS
 - e) FOUL WATER DRAINAGE
2. SURFACE WATER DRAINAGE IS TO BE PROVIDED CONNECTING TO SUITABLE INTERCEPTOR PITS.
3. FURNITURE TO BE PROVIDED AT BERTH INCLUDES:
 - a) BOLLARDS
 - b) MOORING RINGS
 - c) OVER-SIDE EMERGENCY LADDERS
 - d) OVER-SIDE EMERGENCY LADDERS
 - e) LIFE BELT MOUNTING
 - f) SALT WATER FIRE HYDRANTS
 - g) FRESH WATER HYDRANTS
 - h) ELECTRICAL COMMUNICATION BOXES
4. BERTH AND SECURE HANDSTANDING TO BE LIT BY MEANS OF HIGH MAST FLOODLIGHTS.

CONCRETE NOTES:

1. STRUCTURAL CONCRETE SHOULD BE C40/50 WITH A MINIMUM CEMENT CONTENT OF 400kg/m³ (>46% GGBS). MASS CONCRETE SHOULD BE C20/25.
2. THE COVER FOR ALL STEEL REINFORCEMENT SHALL NOT BE LESS THAN 75MM UNLESS OTHERWISE INDICATED ON THE DRAWINGS.
3. CONCRETE FINISH SHOULD BE U4.

GRANULAR FILL NOTE:

1. CLASS 6A MATERIAL IS TO BE USED TO FORM THE CORE OF THE NEW QUAY IN THE RECLAIMED AREA.
2. REFER TO VOL A: WORKS REQUIREMENTS APPENDIX 6/7 FOR SUB-GRADE AND SUB-BASE TESTING AND SURCHARGING.

0	21.11.25	ISSUED FOR PLANNING	JK	CF
REV	DATE	DESCRIPTION	BY	APP

PROJECT:

ROS AN MHÍL DEEP WATER QUAY

TITLE:

DECK FURNITURE GENERAL DETAILS

CLIENT:

DEPARTMENT OF AGRICULTURE,
FOOD & THE MARINE

DRAWN: JK		CHECKED: CF		APPROVED: CF	
PROJECT NUMBER: 24984		DATE: NOVEMBER 2025		SCALE @ A1: AS SHOWN	
ACCEPTANCE CODE: S		PURPOSE OF ISSUE: ISSUED FOR PLANNING PERMISSION		PURPOSE CODE: P3	
DRAWING NUMBER: 24984-XX-XXX-DR-MWP-CE-5412					REV: 0